

L57xxx4-V03
Termination Load 50 ohm
N / 4.3-10 / 7/16
DC-4000



Termination Load 50ohm DC-4000 2W / 5W / 10W / 25W

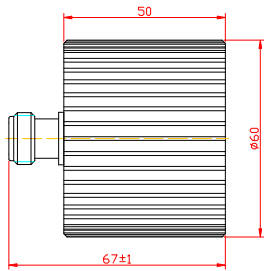
Type	N Female	L5730024-v03	L5730054-v03	L5730104-v03	L5730254-v03
	N Male	L5740024-v03	L5740054-v03	L5740104-v03	L5740254-v03
	4.3-10 Female	L5710024-v03	L5710054-v03	L5710104-v03	L5710254-v03
	4.3-10 Male	L5720024-v03	L5720054-v03	L5720104-v03	L5720254-v03
	7/16 Female	L5750024-v03	L5750054-v03	L5750104-v03	L5750254-v03
	7.16 Male	L5760024-v03	L5760054-v03	L5760104-v03	L5760254-v03
	Power Rating (W)	2	5	10	25
Frequency (MHz)	DC - 4000				
PIM3 (dBc, @2x33dBm)	≤ -120				
Impedance (Ω)	50				
VSWR	< 1.2				
Dimension (mm) (excluding connector)	N-F	Ø16 x 30		Ø47 x 39	Ø60 x 50
	N-M	Ø16 x 30			
	4.3-10-F	Ø20 x 30			
	4.3-10-M	Ø20 x 38			
	7/16-F	Ø20 x 38			
	7/16-M	Ø20 x 42			
Weight (kgs) (including connector)	N-F	0.04	0.13	0.19	
	N-M	0.04	0.14	0.20	
	4.3-10-F	0.06	0.15	0.21	
	4.3-10-M	0.07	0.16	0.22	
	7/16-F	0.09	0.16	0.22	
	7/16-M	0.10	0.19	0.25	
Ingress Protection	IP65				
Operating Temperature (°C)	-40 to +80				

Packing Information

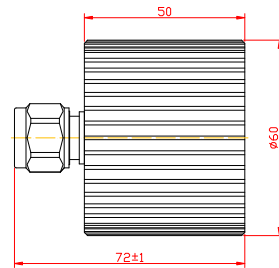
Packing Size (mm)	2W/5W: 220 x 220 x 215 10W/25W: 350 x 350 x 185
SKU (unit/inner carton)	2W/5W: 100 pieces per inner carton/box 10W/25W: 50 pieces per inner carton/box

(C)YPX3H5EMOW
(C)YPX6H5EMOW
(C)YPX12H5EMOW
(C)YPX63H5EMOW

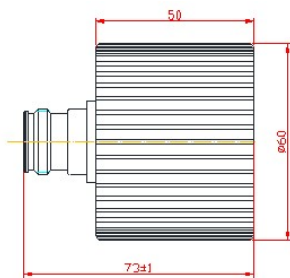
L57xxxx4-V03
Termination Load 50 ohm
N / 4.3-10 / 7/16
DC-4000



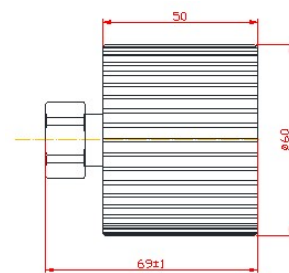
25W N Female



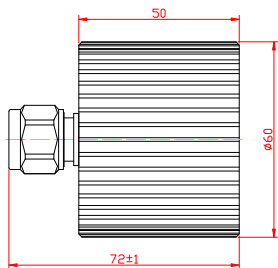
25W N Male



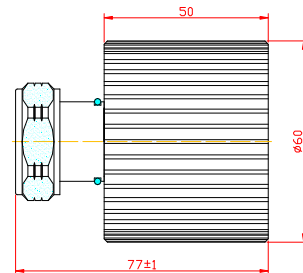
25W 4.3-10 Female



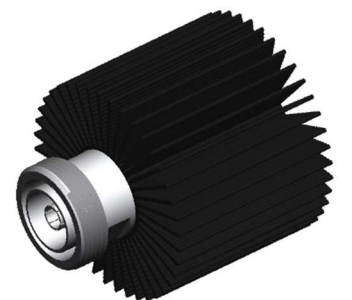
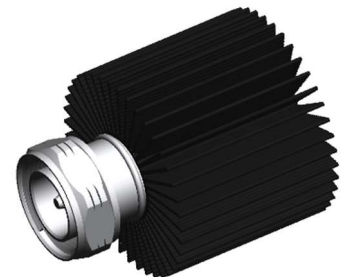
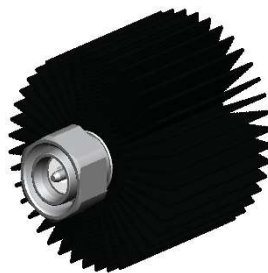
25W 4.3-10 Male



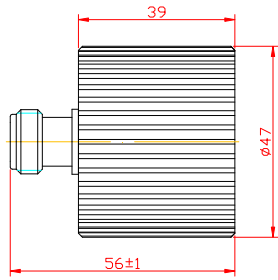
25W 7/16 Female



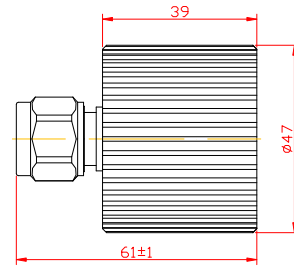
25W 7/16 Male



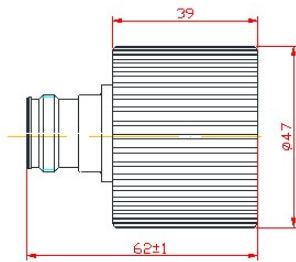
L57xxx4-V03
Termination Load 50 ohm
N / 4.3-10 / 7/16
DC-4000



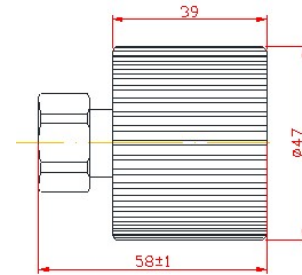
10W N Female



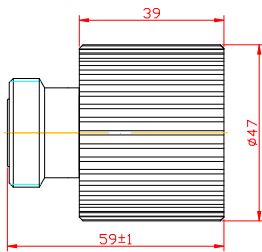
10W N Male



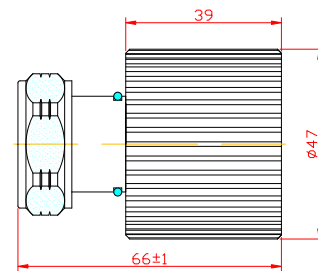
10W 4.3-10 Female



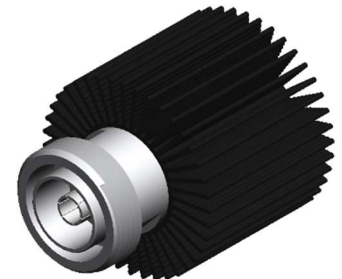
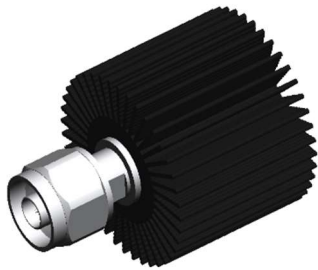
10W 4.3-10 Male



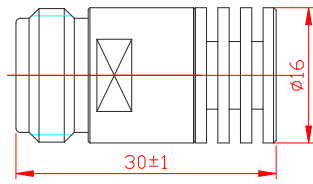
10W 7/16 Female



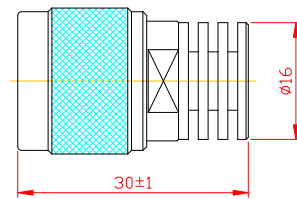
10W 7/16 Male



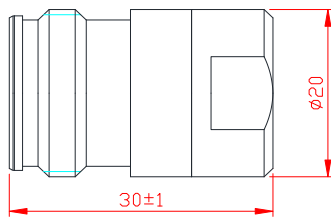
L57xxxx4-V03
Termination Load 50 ohm
N / 4.3-10 / 7/16
DC-4000



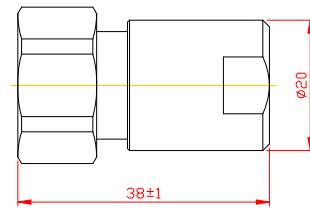
2W / 5W N Female



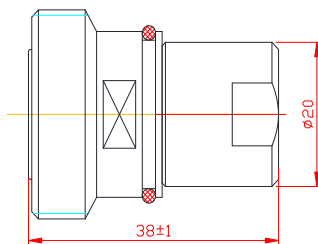
2W / 5W N Male



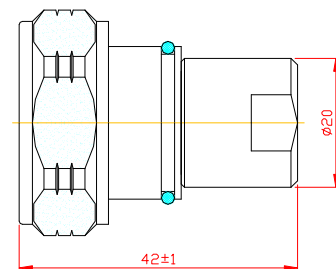
2W / 5W 4.3-10 Female



2W / 5W 4.3-10 Male



2W / 5W 7/16 Female



2W / 5W 7/16 Male

